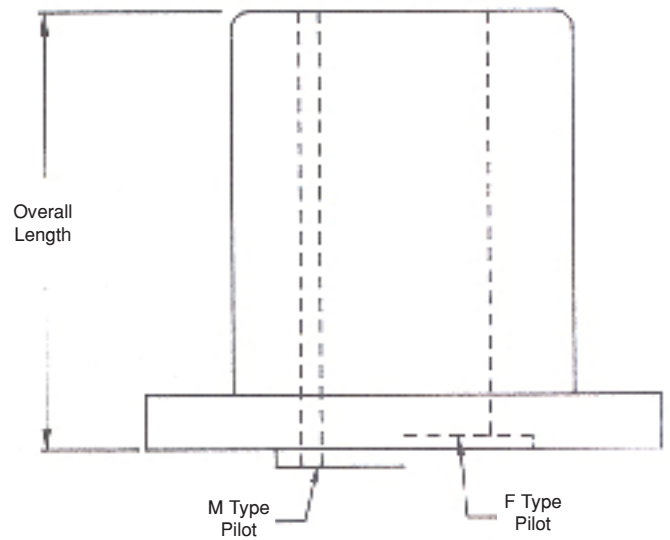
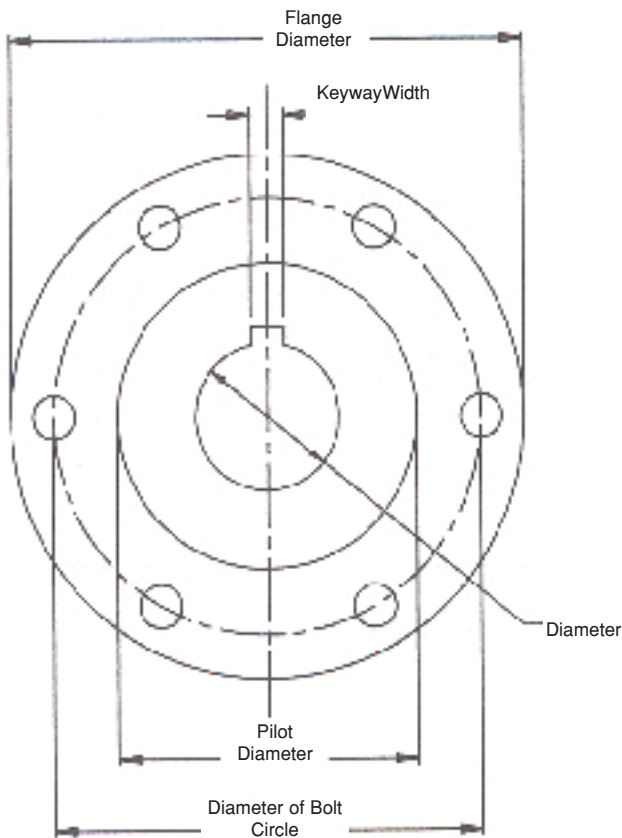


**BUCK  ALGONQUIN**

Transmission Couplings



Bores	Keyways
3/4"	3/16"
7/8" - 1 1/8"	1/4"
1 1/2"	5/16"
1 3/4"	3/8"
2"	7/16"
2 1/4"	1/2"
2 1/2" - 2 3/4"	5/8"

# Transmission Guide

Flange Dia.	Transmission	Model	Pilot M/F	# of Bolts	Bolt Dia.	Bolt Circle	Part # Prefixes		
							Solid	Split	Taper
3.5	Universal	ATOMIC 4	1.876/F	3	3/8"	2.750	MC3500		
3.945	Volvo Penta	MB10A, MD38, MD7A, MD11C	2.362/F	4	.3937	3.149	MVP400		
4.0	Hurth	HBW5,10,20,50,100,125,150,150V,220,250	2.50/M	4	3/8"	3.250	MC004	401S, 400B	
4.0	Borg Warner	70C,1017,1023,2301,DD	2.50/M	4	3/8"	3.250	MC004	401S, 400B	
4.0	Newage	PRM DELTA	2.50/M	4	3/8"	3.250	MC004	401S, 400B	
4.0	Paragon	HF, HB, RO	2.00/M	4	3/8"	3.250	MC4020	400S, 400A	
4.0	Paragon	P-200, P-300, P-13, PV-300	2.625/M	4	3/8"	3.250	MC4026		
4.5	Paragon	RA, PV400	2.625/M	4	3/8"	3.750	MC4526		
4.75	Capitol	5HD200	2.50/F	6	7/16"	3.875	MC4725	475A, 475B	TC475
4.75	Twin Disc	MG-502, MG-502-1	2.50/F	6	7/16"	3.875	MC4725	475A, 475B	TC475
4.75	ZF	IRM-220A,IRM-220V,IRM-220A/V,IRM220V1,IRM225A	2.50/F	6	12mm	3.875	MC4726	476A, 476B	TC476
5.0	Borg Warner	72C-1017,1018,RED 71C,1004,1005,1013,1014,2001	2.50/M	4	7/16"	4.25	MC005	500A,500C	TC500
5.0	Hurth	HSW630A,630H,630V,HBW630,630A,400,450,600,630	2.50/M	4	7/16"	4.25	MC005	500A, 500C	TC500
5.0	Newage	PRM 210/160	2.50/M	4	7/16"	4.25	MC005	500A, 500C	TC500
5.0	Paragon	P-400	2.75/M	4	3/8"	4.125	MC5027	500B, 500D	
5.0	Volvo Penta	MS, MS3, MS4A, MV2	2.50/M	4	7/16"	4.25	MC005	500A, 500C	TC500
5.0	Yanmar	30M30H/G, KVH20, KHIS	2.556/M	4	10mm	3.937	MCY005	500YS	
5.0	ZF	IRM41A2,A3,IRM50A2,V5,IRM501,50A2/K3,IRM50V2/3LD	2.50/M	4	7/16"	4.25	MC005	500A,500C	TC500
5.75	Allison		3.00/F	6	1/2"	4.75	MC573	575-1	TC575
5.75	Borg Warner		3.00/F	6	1/2"	4.75	MC573	575-1	TC575
5.75	Capitol	2H3/4HE-10200, 2HE/4H3-11200, M105, M125	3.00/F	6	1/2"	4.75	MC573	575-1	TC575
5.75	Hurth	HSW800A, HSW800V	3.00/F	6	1/2"	4.75	MC573	575-1	TC575
5.75	Newage	PRM-601,601A,302,401,402	3.00/F	6	1/2"	4.75	MC573	575-1	TC575

# Transmission Guide

Flange Dia.	Transmission	Model	Pilot M/F	# of Bolts	Bolt Dia.	Bolt Circle	Part # Prefixes		
							Solid	Split	Taper
5.75	Hurth	HSW800A3	3.000/F	6	5/8"	4.750	MC574	575-2	TC576
5.75	Twin Disc	MG-5050,5050A,5050V,5061,5061A,506,506-1,506A 507,507-2,507-1,507A1,507A2	3.000/F	6	5/8"	4.750	MC574	575-2	TC576
5.75	ZF	IRM301, IRM220V/LD	3.000/F	6	1/2"	4.750	MC573	575-1	TC575
5.75	ZF	IRM301A,301PL-2,280A,IRM301PL-1,220PL	3.000/F	6	16mm	4.750	MC574	575-2	TC576
6.69	ZF	165PL, IRM325A	4.528/F	12	16mm	5.512			TC669
7.25	Allison	M	3.75/F	6	5/8"	6.000		725A,725B	TC725
7.25	Allison	M	3.75/F	6	3/4"	6.000		726A,726B	TC726
7.25	Capitol	D5072	3.75/F	6	3/4"	6.000		726A,726B	TC726
7.25	Capitol	4HE10700,11700,HY22000,24000,2500,6900	3.75/F	6	5/8"	6.000		725A,725B	TC725
7.25	Newage	PRM60, 601, 601A	3.75/F	6	5/8"	6.000		725A,725B	TC725
7.25	Twin Disc	MG506,507,507-1/2,507A-1/2,509,509-1SC,508-1,509-1	3.75/F	6	3/4"	6.000		726A,726B	TC726
7.25	ZF	IRM301AL, V250M	3.75/F	6	16mm	6.000		725A,725B	TC725
7.25	ZF	IRM310,310A,310PL,310ALPL,V250M,302V/6,311A/PL,304A	3.75/F	8	16mm	6.000		725BZF	TC72ZF
7.28	ZF	BW190, 195, 195P	4.725/F	12	18mm	6.122			TC725G
7.87	ZF	IRM200, IRM320PL, V250M	5.511/F	8	16mm	6.732		787ZF	
8.07	ZF	IRM250AL/PL, IRM350A, V250M	5.511/F	10	18mm	6.692		807ZF	TC807
8.86	ZF	IRM320, IRM320/LAV	5.511/F	8	16mm	7.710			TC886
9.00	Allison	M20	6.000/F	8	3/4"	7.500		900-1	TC900
9.00	Allison	MH, 15R-L	6.000/F	8	7/8"	7.500		900-2	TC901
9.00	Twin Disc	MG510A,5111A,DD511,510,511SC,5114A	6.000/F	8	7/8"	7.500		900-2	TC901
9.00	ZF	IRM320AL	6.000/F	8	7/8"	7.500		900-2	TC901
10.25	ZF	IRM350LAV, BW161	5.511/F	10	20mm	8.852		1025	
10.50	Twin Disc	MG512, MG513, MG514	5.000/F	8	1"	8.750		1050	
10.50	ZF	IRM320LAV	5.000/F	8	1"	8.750		1050	

**BUCK  ALGONQUIN**

